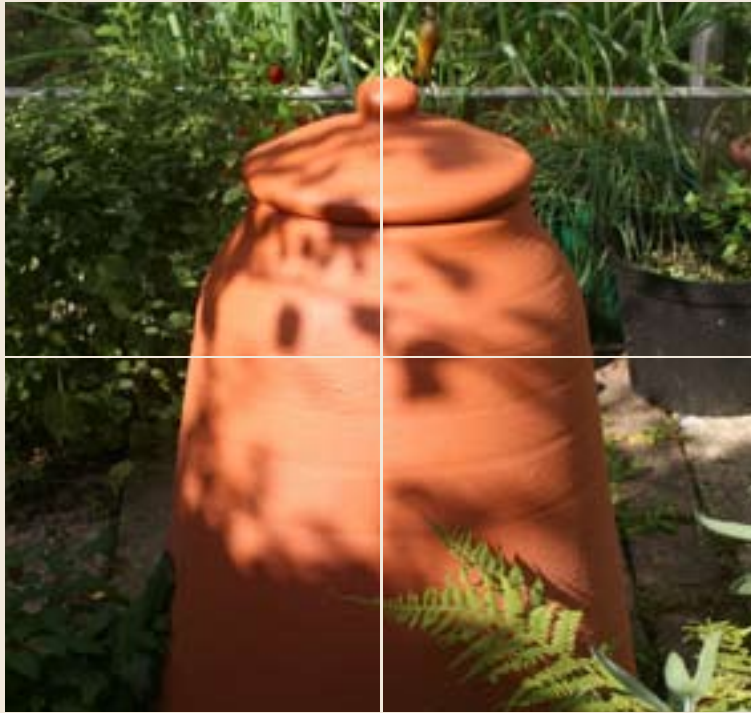
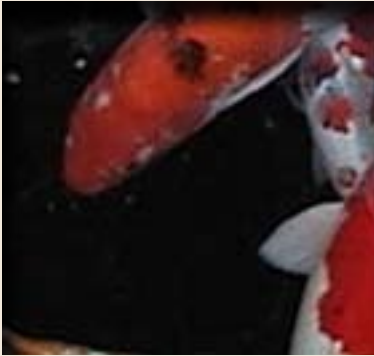


Room for a View Ltd.



Products 2011

Welcome to our 2011 catalogue....

In here you'll find our current range of products covering the garden, hardware and aquatics markets.

Garden and Hardware

Still the top selling line - our Finia™ water feature reservoirs. These come in three sizes with the largest carrying up to a tonne in weight. This product is an international hit for many reasons, primarily because of its unique design. Incorporating a dedicated hatch so that feature removal is not necessary when cleaning / removing the pump and also having a series of fins which allow such great weights to be supported, it is superior to any other feature reservoir.

Also for this sector we have our Terracottage branded products designed with today's gardener in mind. Useful products that help to fit gardening into the time and space that gardeners have and making it work.

Our Water Butt is a space saving and convenient way to take the gardener forward in today's 'green' climate. Being wall mounted and including a rain diverter kit its large capacity means that virtually any space on a wall can accommodate it and collect rain for use in the dry spells.

In this range we also have our Rhubarb forcer, the first in a line of terracotta coloured plastics that offer a great looking product for the vegetable grower, whilst eliminating the age old problem of cracking and breakages.

Aquatics

Our Koi pond / inspection tank is for the true enthusiast, a large bowl holding 2300 litres. A steep sided 4ft deep and 6ft wide pond that can be used for fish inspection, fish medication or temporary use when carrying out repairs and cleaning of the main one.

This is a useful and necessary piece of equipment and large enough to take several fish without fear of overcrowding.

More products will be coming soon, but if you would like to ask about something that you don't see here then please call on: +44 (0) 1945 774114
www.roomforaview.com





Finia™

Water Feature Reservoirs

Finia™

Water Feature Reservoirs

The success of Finia™ Water Feature Reservoirs is due to 100% suitability to the job and increase in demand for them shows that water features are an enduring part of the market and that the Finia is the number one favourite to support them.

Suitable for all types of landscaping from the professional to the lay gardener the Finia is easy to install, easy to use and easy to maintain. You no longer have to remove the water feature to get at the pump; the Finia has a dedicated hatch through which access is gained.

There are four sizes of reservoir; each being a three piece unit with dedicated pump access hatch and all made from 100% recycled plastic. Just choose the correct size to suit the respective feature, if it's for an 'in ground' position and the ground is unstable then there's a mould for creating the perfect bed to sit the Finia into as well.

All Finia™ reservoirs must be positioned on firm, level ground. Ground/footings under the container must be suitable for the total weight of the water feature.

Do not leave uncovered Finia™ plus heavy feature in direct sunlight.

For in ground installation prepare the hole 100 mm wider than the container.

Allow enough depth for the base/footings and Finia™. (Finia™ 650 and 1000 depth to 30cm plus footings, Finia™1800 depth to 35 cm plus footings)

If weight exceeds recommended weight tolerance and/or is unevenly distributed, back-fill the fins with soil or concrete.

(Ask your retailer about the mould for preparing a concrete base)

Weight tolerance

Finia™ 650 in ground/above ground	150kg of evenly distributed weight
Finia™ 1000 in ground/above ground	250kg of evenly distributed weight
Finia™ 1375 in ground	250kg of evenly distributed weight
Finia™ 1800 in ground	1000kg of evenly distributed weight



Water Butts

From the Terracottage range



Water Butt

Save Water. Go Green!



Rain Diverter

The Water Butt is our latest water saving product from the Terracottage Range. Responsible water management is essential and the easiest way to do it is by collecting your own rain water to use for watering flowers, vegetables, plants, trees and filling the bird bath.

Rain water is natural, has no chlorine and is a more environmentally friendly to use than over extraction from ground water.

Collecting your own rain water means that you have a supply throughout all seasons, regardless of hose pipe bans.

Space can be at a premium in gardens, that's why we've made ours wall mounted, with plenty of room underneath to place buckets, or to attach a hose. Attach it to an outside wall by using the brackets that are included. Drill the wall and place the raw plugs into it, place the brackets over the drilled holes, place screws into the holes and tighten.

Made from 100% recycled and recyclable plastic.
Includes rain diverter.
Holds 160 litres
Child safety lid.



Cross-bar for stability



Solid Brass Flange



Tap



Rain Diverter Kit

Fixing Kit

Bracket Screws + Plugs



Wall Screws + Plugs



Wall Brackets



Rhubarb Forcer

from the Terracottage range

by Room for a View Ltd

It stacks but it doesn't crack

It's a perfect replica of a grand old design, but a fraction of the weight and it won't break.

Built in the old traditional style of kitchen garden terracotta forcers, it has a well fitting lid with knob, a traditional A line shape and can be staked.



- Made from medium density polyethylene
- Frost proof
- Light weight
- Strong and versatile
- Measures 75cm high, 50cm across

Brings your rhubarb on a treat

Order from us on: 01945 774114

Terracottage Rhubarb Forcer

‘Must have’ product for ‘Grow Your Own’ market.

‘Best Buy’ in BBC Gardeners’ World Magazine

The grow your own market is now huge. It’s not expensive, it’s not difficult, it’s interesting and the produce tastes superior. But spare time is at a premium for most and so it’s vital to have the right equipment.

The Terracottage Rhubarb Forcer is built in the old traditional style of kitchen garden terracotta forcers, with a well fitting lid with knob and a traditional A line shape. It looks perfect in the vegetable plot, on the allotment or positioned over a pot.

Get the sweetest produce and get it early.

Force rhubarb, chicory, asparagus, anything you choose and make light work of it. Straight from your own garden, earlier fruit and vegetables are tastier, sweeter and more delicate. A real treat.

It stacks but it doesn’t crack

Our Rhubarb Forcer is easily portable, frost proof and stackable so it’ll survive in gardens all over the country for years. Measuring 75cm high, 50cm across and made from multi density polyethylene it’s absolutely perfect at what it does.

Traditional but tough

The look of a good old terracotta pot can’t be beaten, but the weight and the fragility make it prohibitive, now you can have the look, the versatility and the life span. No chipping or cracking, just good old fashioned home grown produce, and a huge sense of satisfaction.

RRP £65.50 plus P&P



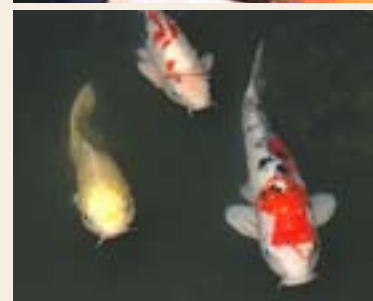
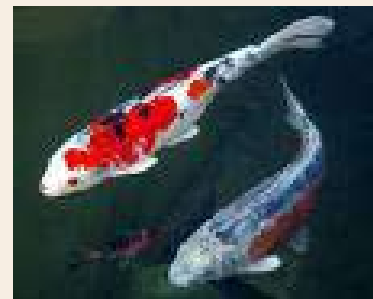
Large Koi bowl/pond

Our large Koi bowl/pond is the ideal solution to the problem of where to put your fish when cleaning your main pond and for all situations which require them to be separated from their main habitat.

Using 5mm thick plastic to ensure stability, 1.2 m deep, 1.8m wide and holding up to 2300 litres of water our Koi bowl is large enough to keep several fish. Perfect for dipping Koi or anaesthetising prior to treatment or medication, also for quarantining when introducing new Koi from a dealer.

If you intend artificially stripping Koi of their eggs or sperm then separation is recommended and so ideally for brood stock prior to spawning.

Easy to store when not in use, lasts for many years, easily cleanable.



**For more information please contact us direct on:
+44 (0) 1945 774114**



POS material for trade customers

We have brought out eye catching and informational POS leaflets for both our Water Butt and Finia™ ranges. Emphasizing the 'green' aspects of our products both for water saving and use of 100% recycled materials, we want to help you to get the message across to your customers that green really is a viable option when using plastics.

Designed to maximise information on both of these products the leaflets show in detail how both the Finia™ and the Water Butt can be used, what and who they are designed for and give their unique selling points. Absolutely vital for garden centres, hardware stores and on-line outlets (for which we have electronic versions), these leaflets can be stocked / made available, next to the products or at the tills/ pay points, reminding the customer what's available, why they need the products and that the store carries them.

The Finia™ leaflet covers all four sizes, gives weight tolerances, suitability's, uses, installation instructions USP's and good images. The Water Butt leaflet gives volume, size, shows how it connects to the down pipe and to the wall, with images of all parts included and how to fix it to the wall and what you will need to do it.

Vital material for increased sales, these shouldn't be missed.

For yours call 01945 774114